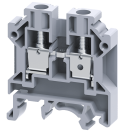


CTS6U



6 sq.mm Standard Feed Through Terminal Blocks

6 sq.mm Feed Through Terminal Blocks are the most Versatile terminals for control, Automation, Instrumentation and Power Distribution applications. A specially designed flexible foot enable easy mounting and dismounting from the Din rail with the help of screw driver. These Terminal Blocks have marker holding recesses to accept marking tags for circuit identification. Cross connection can be achieved with the aid of shorting links / sleeves & screws.

TECHNICAL DATA

Rated Voltage	1000 V
Rated Current	41 A
Tightening Torque	0.8 Nm
Housing Material	Polyimide
Product Function	Feed Through
Wire Entry Orientation	Side Entry
Mounting Possibility	DIN 32/DIN 35/DIN 35-15 Rail
Screw Size	M3.5
Operated by	Screwdriver
Rated Surge Voltage	8 KV
Pollution Degree	3

CONNECTION DATA

Conductor Cross Section Stranded min.	0.5 mm ²
Conductor Cross Section Stranded max.	6 mm ²
Conductor Cross Section AWG/Kcmil min	22 AWG
Conductor Cross Section AWG/Kcmil max	8 AWG
Conductor Cross Section Stranded with Ferrule/Lug min	0.5 mm ²
Conductor Cross Section Stranded with Ferrule/Lug max	6 mm ²
2 Conductors with same Cross Section Stranded min	0.5 mm ²
2 Conductor with same Cross Section Stranded max	4 mm ²
Conductor Cross Section Solid min	0.5 mm ²
Conductor Cross Section Solid max	6 mm ²
2 Conductors with same Cross Section Stranded with TWIN Ferrule/Lug min	0.5 mm ²
2 Conductor with same Cross Section Stranded with TWIN Ferrule/Lug max	4 mm ²
Stripping Length	9 mm
Internal Cylindrical Gauge	A5

DIMENSIONS

Height with DIN 32 rail	52.8 mm
Height with DIN 35 x 15 mm rail	55.5 mm
Height with DIN 35 x 7.5 mm rail	47.8 mm
Length	43 mm
Width (Thickness)	8 mm

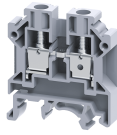
ORDERING INFORMATION

CAT. NO.	DESCRIPTION	STD. PACK
CTS6U	6 sq.mm Feed Through Terminal block in Grey colour	100
CTS6UR	6 sq.mm Feed Through Terminal block in Red colour	100
CTS6UY	6 sq.mm Feed Through Terminal block in Yellow colour	100
CTS6UBU	6 sq.mm Feed Through Terminal block in Blue colour	100
CTS6UGN	6 sq.mm Feed Through Terminal block in Green colour	100
CTS6UBK	6 sq.mm Feed Through Terminal block in Black colour	100
CTS6UO	6 sq.mm Feed Through Terminal block in Orange colour	100
CTS6UW	6 sq.mm Feed Through Terminal block in White colour	100
CTS6UBG	6 sq.mm Feed Through Terminal block in Beige colour	100

ACCESSORIES

IMAGES	CAT. NO.	DESCRIPTION	STD. PACK
	CA501-1M	Din 32 Rail unslotted 1 meter	50
	CA501-1M-S	Din 32 Rail slotted 1 meter	50
	CA501-2M	Din 32 Rail unslotted 2 meter	50
	CA501-2M-S	Din 32 Rail slotted 2 meter	50
	CA701-1M	Din 35 Rail unslotted 1 meter	50
	CA701-2M	Din 35 Rail unslotted 2 meter	50
	CA701-2M-S	Din 35 Rail slotted 2 meter	50
	CA701-1M-S	Din 35 Rail slotted 1 meter	50
	CA701-15-1M	Din 35 Rail 15 deep unslotted 1 meter	50
	CA701-15-1M-S	Din 35 Rail 15 deep slotted 1 meter	50
	CA701-15-2M	Din 35 Rail 15 deep unslotted 2 meter	50
	CA701-15-2M-S	Din 35 Rail 15 deep slotted 2 meter	50
	CA702	End Clamp in Polyamide 66 suitable for Din 32 / Din 35 / Din 35-15 Rails	50
	CA802	End Clamp in Polyamide suitable for Din 35 / Din 35-15 Rails	50

CTS6U



connectwell
THE RIGHT CONNECTION

ACCESSORIES

IMAGES	CAT. NO.	DESCRIPTION	STD. PACK
	EP6/10U	End Plate in Grey colour	50
	EP6/10UBU	End Plate in Blue colour	50
	EP6/10UY	End Plate in Yellow colour	50

	PP6/10U	Partition Plate in Grey colour suitable for CTS6U / CTS10U Terminal Block	50
--	---------	---	----

	SP6/10U	Separator Plate in Grey colour	100
--	---------	--------------------------------	-----

	CA723/2	Pre Assembled Shorting Link assemblies with 2 poles	100
	CA723/3	Pre Assembled Shorting Link assemblies with 3 poles	50
	CA723/4	Pre assembled Shorting Link assemblies with 4 poles	50
	CA723/5	Pre assembled Shorting Link assemblies with 5 poles	50
	CA723/6	Pre assembled Shorting Link assemblies with 6 poles	10
	CA723/7	Pre assembled Shorting Link assemblies with 7 poles	10
	CA723/10	Pre Assembled Shorting Links assemblies with 10 poles	10

	CA743/2	Insulated Pre assembled Shorting Link for 2 way shorting	100
	CA743/3	Insulated Pre assembled Shorting Link for 3 way shorting	50
	CA743/4	Insulated Pre assembled Shorting Link for 4 way shorting	50
	CA743/5	Insulated Pre assembled Shorting Link for 5 way shorting	50
	CA743/6	Insulated Pre assembled Shorting Link for 6 way shorting	10
	CA743/7	Insulated Pre assembled Shorting Link for 7 way shorting	10
	CA743/10	Insulated Pre assembled Shorting Link for 10 way shorting	10

	CA710/2	External Comb Type Shorting Link available in 2 Pole	100
	CA710/3	External Comb Type Shorting Link available in 3 Pole	50
	CA710/4	External Comb Type Shorting Link available in 4 Pole	50
	CA710/10	External Comb Type Shorting Link available in 10 Pole	20

	CA703/2	Permanent Shorting Link for 2 way shorting	100
	CA704/2	Permanent Shorting Link for 3 way shorting	100
	CA704/2	Permanent Shorting Link for 3 way shorting	100
	CA734/10	Permanent Shorting Link for 10 way shorting	100

ACCESSORIES

IMAGES	CAT. NO.	DESCRIPTION	STD. PACK
	CA707/S/Q/1	Shorting Sleeve and Screw	100

	CA706/2	Removable Shorting link suitable for CTS6U	100
--	---------	--	-----

	CA707/L/Q/1	Long Sleeves & Screws	100
--	-------------	-----------------------	-----

	CA509/K/8	Marking Tag with Vertical printing.	100
--	-----------	-------------------------------------	-----

	SWL6	Warning label suitable for 8mm wide terminal block	50
--	------	--	----

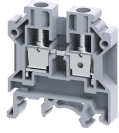
	CA707/TS/05	Test Socket suitable for CTS6U / CTS10U Terminal Blocks	100
--	-------------	---	-----

	SCS0.8/4	Electricians Screwdriver for slotted screws	10
--	----------	---	----

APPROVALS



CTS6U



connectwell
THE RIGHT CONNECTION

RATINGS AS PER STANDARDS

STANDARDS	UL 1059	CSA C.22.2 No:158	DIN EN60947-7-1
Approvals	UL	CSA	VDE
Conductor Cross Section Stranded min.	22 AWG	22 AWG	1.5 mm ²
Conductor Cross Section Stranded max.	8 AWG	8 AWG	6 mm ²
Rated Voltage	600 V	600 V	800 V
Rated Current	50 A	50 A	41 A
Tightening Torque	14 lb-in	14 lb-in	0.8 Nm
STANDARDS	IEC/EN60947-7-1	EN60079-7	IEC 60079-0 & IEC 60079-7
Approvals	CE	ATEX	AEx
Conductor Cross Section Stranded min.	0.5 mm ²	1.5 mm ²	22 AWG
Conductor Cross Section Stranded max.	6 mm ²	6 mm ²	8 AWG
Rated Voltage	1000 V	690 V	600 V
Rated Current	41 A	36 A	50 A
Tightening Torque	0.8 Nm	0.8 Nm	14 lb-in
Operating Temperature Range		-40 to +85 °C	
STANDARDS	EN60079-7		
Approvals	ATEX-IECex		
Conductor Cross Section Stranded min.	1.5 mm ²		
Conductor Cross Section Stranded max.	6 mm ²		
Rated Voltage	690 V		
Rated Current	36 A		
Tightening Torque	0.8 Nm		