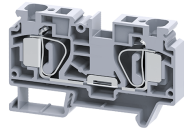


# CSC16T



**connectwell**  
THE RIGHT CONNECTION

## 16 sq.mm Spring Clamp Feed Through Terminal Blocks

The Spring Clamp is operated by using a screw driver to provide an access to the wire through an opening in the spring clamp. The inserted wire gets clamped on to the current bar when the screw driver is removed.

### TECHNICAL DATA

Rated Voltage	800 V
Rated Current	76 A
Housing Material	Polymide
Product Function	Feed Through
Wire Entry Orientation	Top Entry
Mounting Possibility	DIN 35/DIN 35-15 Rail
Operated by	Screw Driver
Rated Surge Voltage	8 KV
Pollution Degree	3

### CONNECTION DATA

Conductor Cross Section Stranded min.	1.5 mm <sup>2</sup>
Conductor Cross Section Stranded max.	16 mm <sup>2</sup>
Conductor Cross Section AWG/Kcmil min	16 AWG
Conductor Cross Section AWG/Kcmil max	4 AWG
Conductor Cross Section Stranded with Ferrule/Lug min	1.5 mm <sup>2</sup>
Conductor Cross Section Stranded with Ferrule/Lug max	16 mm <sup>2</sup>
2 Conductors with same Cross Section Stranded min	1.5 mm <sup>2</sup>
2 Conductor with same Cross Section Stranded max	10 mm <sup>2</sup>
Conductor Cross Section Solid min	1.5 mm <sup>2</sup>
Stripping Length	20 mm

### DIMENSIONS

Height with DIN 35 x 15 mm rail	59 mm
Height with DIN 35 x 7.5 mm rail	51.6 mm
Length	82 mm
Width (Thickness)	12 mm

### ORDERING INFORMATION

CAT. NO.	DESCRIPTION	STD. PACK
CSC16T	16 sq.mm Feed Through Spring Clamp Terminal Block in Grey colour	50
CSC16TR	16 sq.mm Feed Through Spring Clamp Terminal Block in Red colour	50
CSC16TY	16 sq.mm Feed Through Spring Clamp Terminal Block in Yellow colour	50
CSC16TBU	16 sq.mm Feed Through Spring Clamp Terminal Block in Blue colour	50
CSC16TGN	16 sq.mm Feed Through Spring Clamp Terminal Block in Green colour	50

### ORDERING INFORMATION

CAT. NO.	DESCRIPTION	STD. PACK
CSC16TBK	16 sq.mm Feed Through Spring Clamp Terminal Block in Black colour	50

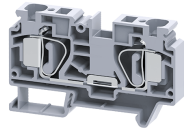
### ACCESSORIES

IMAGES	CAT. NO.	DESCRIPTION	STD. PACK
	CA701-1M	Din 35 Rail unslotted 1 meter	50
	CA701-2M	Din 35 Rail unslotted 2 meter	50
	CA701-2M-S	Din 35 Rail slotted 2 meter	50
	CA701-1M-S	Din 35 Rail slotted 1 meter	50
	CA701-15-1M	Din 35 Rail 15 deep unslotted 1 meter	50
	CA701-15-1M-S	Din 35 Rail 15 deep slotted 1 meter	50
	CA701-15-2M	Din 35 Rail 15 deep unslotted 2 meter	50
	CA701-15-2M-S	Din 35 Rail 15 deep slotted 2 meter	50
	CA103	EndClamp in Polyamide suitable for Din 35/Din 35-15 rails	50
	CA702	End Clamp in Polyamide 66 suitable for Din 32 / Din 35 / Din 35-15 Rails	50
	CA802	End Clamp in Polyamide suitable for Din 35 / Din 35-15 Rails	50
	EPCSC16T	End Plate in Grey.	50
	EPCSC16TBU	End Plate in Blue colour	50
	CA801/5	Insulated Push-In Type shorting link	100
	CA509/K12	Marking Tag Blank suitable for CTS16U / CTS25UN / CGT16N / CDB25 / CMDB25 / CSC16T / CSCG16T Terminal Blocks	100
	SWL16	Warning label suitable for 12mm wide terminal block	50
	SCS1/5.5	Electricians Screwdriver for slotted screws	10

### APPROVALS



CSC16T



**connectwell**  
THE RIGHT CONNECTION

**RATINGS AS PER STANDARDS**

<b>STANDARDS</b>	<b>UL 1059</b>	<b>IEC/EN60947-7-1</b>
Approvals	UL	CE
Conductor Cross Section Stranded min.	16 AWG	1.5 mm <sup>2</sup>
Conductor Cross Section Stranded max.	4 AWG	16 mm <sup>2</sup>
Rated Voltage	600 V	800 V
Rated Current	85 A	76 A